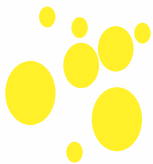


**KELVEDON
ST MARY'S**
CHURCH OF ENGLAND
PRIMARY ACADEMY, NURSERY
& AUTISM SUPPORT CENTRE

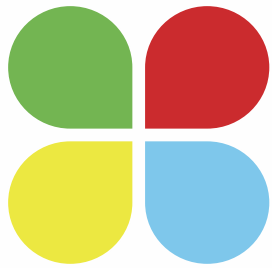


'Making Great Memories'
www.kelvedonacademy.com





*“This school is
one big opportunity”
Year 5 pupil*



**KELVEDON
ST MARY'S**
CHURCH OF ENGLAND
PRIMARY ACADEMY, NURSERY
& AUTISM SUPPORT CENTRE

A welcome from our headteacher

May I take this opportunity of extending a very warm welcome to you and your child as you enter into the life of Kelvedon St. Mary's Church of England Primary Academy.

Kelvedon St. Mary's is the founding school of The Canonium Learning Trust multi-academy. We aim to work in partnership with other schools to focus on our core purpose – teaching and learning.

Our vision at Kelvedon is to create an environment where every learner has the opportunity to amaze us.

We have been on a long journey to realise this vision and, in February 2016, Ofsted recognised that we had achieved it by grading the school as outstanding. **But the journey doesn't stop!** My expert team of teachers, learning support staff, administration staff and directors are committed to maintaining the very highest standards for your child and are always seeking ways in which they can improve learning experiences and outcomes for everyone who is part of our school.

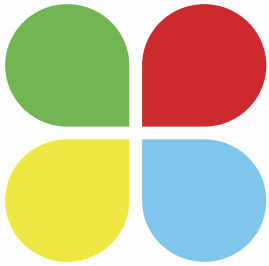
My teams challenge the status quo, are able to learn, unlearn and relearn; they are open minded, have a growth mind set and are brilliant at sharing learning across the school and region. They are like this because they want to provide your child with the best learning experiences possible – nothing is beyond our dreams!

Your child will enjoy an all-round education here at Kelvedon St. Mary's. We will equip them with the academic skills that they need to tackle a challenging and changing world. We will provide them with experiences and opportunities to develop new and exciting skills that will round them as individuals. We will nurture them to become caring, compassionate and active members of society.

We have even more exciting times ahead of us and I am really looking forward to experiencing and sharing them with you all.

Learning together ... **Mr Mike Walsh** Headteacher Bed (HONS) NPQH and Chief Education Officer of The Canonium Learning Trust





Life at Kelvedon

Kelvedon St. Mary's Primary Academy is a Church of England primary school. We have a commitment to inclusive education and strive to maintain high quality teaching and learning environments for all children.

We work in close partnership with our church and diocese to educate our children within the context of Christian beliefs and practices. We encourage children to develop an understanding of faith, and its significance, through the promotion of Christian values throughout our learning.

In our Christian community, we place a high value on establishing close links between home and school so that we can effectively work together to achieve the best for each child.

Parents and carers are encouraged to share in their child's progress at open door events, sharing assemblies, learning conferences with their child's class teacher, viewing their child's learning, class blogs and through an annual pupil self-evaluation and teacher report.

Parents and carers are always welcome in the school. There are many opportunities to share in special events throughout the year such as assemblies, workshops, concerts, church services and sports events. We keep you informed about school life through our newsletter and website.

The Parent, Teacher and Friends Association are a group of volunteers who support the school with special projects and events that directly benefit your children. They will be organising a range of social events; we hope you will be able to join in.

Our values

At Kelvedon St. Mary's Primary Academy our values underpin all of our learning and we live them and use them in all learning situations.

Our Core Values are:
Respect (*Reverence*)

Letting every learner learn, even if they are different to you.

Caring (*Compassion*)

Make sure that you and everyone else has the chance to learn well.

Co-operation (*Service*)

To be a member of the crew and not a passenger.

Perseverance (*Endurance*)

Never, ever, give up.

Honesty (*Virtue*)

Know what you are good at and do more of it.

Responsibility (*Trust*)

To make smart choices.

Our aims

Our aims for learning and teaching are that all pupils will:

- develop a broad range of communication, mathematical and worldly knowledge and skills
- become confident and independent learners
- be motivated learners and find enjoyment in learning
- develop physically and emotionally to become self-resilient members of society and good citizens



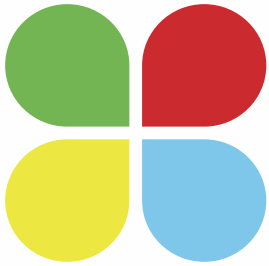
Abuntu!





*'Together We
Achieve'*





Our learning environments

St. Mary's is a group of single storey buildings, comprising 16 class teaching bases. Each base has bright modern furnishings, up to date ICT equipment and every resource a teacher requires to support learning in the best way that they can.

Around the school we have a dedicated safe learning space, The Mosaic Room, for supporting children with autism and social and emotional needs. We have a computer suite, a well-stocked library, a music room, a sensory room, several meeting and training rooms, inclusion learning rooms and learning booths.

Our school has a large hall which is used for assemblies, physical education and as a dining hall at lunchtime. The hall is hired most evenings by local community groups.

Outside we have a range of play spaces, two large playing fields, a covered playground (no more wet playtimes!), an astro-turf, a pond, an outside classroom, allotments, an archaeology area, adventure playgrounds and a 'chill out' space. We fully take advantage of all of our outside space as extra learning environments.

Our school has its own kitchen where a range of wholesome and nutritious hot meals are prepared daily.

In our grounds we have an independent pre/after school care facility.

Kelvedon Academy has one of four primary, Local Authority funded, Autism Support Centres (ASC) and covers the mid-Essex quadrant. It is designated to support 8 children with a primary, complex and additional need in particular areas on the banding descriptors for autism (ASD) who are able to access a mainstream education and do not have any other major or behavioural needs.

The ASC supports children by breaking down the barriers their ASD presents for them in accessing a mainstream education. The vision is that, in time, the children will be able to attend a mainstream setting without specialist provision and achieve age expected goals. All the children within the ASC will have an EHCP and placement for the centre is applied for via the LA Statutory Assessment department.

Learning at Kelvedon St Mary's

Our school is a two form entry primary school and we aim to accommodate 58 children in each year group. This means that we are able to have two classes in each year group and no mixed year classes.

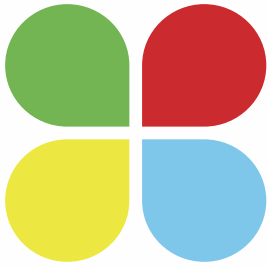
All children build their learning power through the development of our 6Rs. Good learners are Responsible, Resourceful, Reflective, Resilient, Reasoning and Risk taking.

It is the policy of Kelvedon St. Mary's Primary Academy that every child has equal opportunity to participate in every aspect of the curriculum regardless of race, ability or gender.

Each class has a teacher who is responsible for the organisation, planning of work programmes and the monitoring and assessment of progress of the children in their class. Learning and Inclusion Support Assistants further support year teams and groups of pupils. We share our expertise and skills to give maximum benefit to the pupils in our school.

Detailed curriculum plans and blogs showing all of our learning experiences can be found on our web site – www.kelvedonacademy.com





A day at our school

Children can enter the school from 08:45 and our learning begins at 08:55 with registration and assembly.

When new to the school, we provide each child with a free clear plastic water bottle. This is because we understand and value the role water and hydration plays in learning. If the water bottle becomes lost or damaged, a new one can be purchased from the school office.

Learning is fluid throughout the morning and a flexible play time is taken at an appropriate break in the learning.



Every day children learn to write and practice writing; learn to read and apply reading skills; practice mental number skills; learn mathematical concepts and apply them to problem solving.

Literacy skills are developed using foundation subjects as the content of learning to enable smarter use of time.

Lunchtime is staggered for each year group to enable better access of our learning environments and play spaces. The learning doesn't stop; our play volunteers help with equipment, clubs and activities, as do our play mentors. There are plenty of exciting things to do during this break.

Hot lunches are provided at a charge by our kitchen, or pupils can bring their own packed lunch. Older children independently choose to dine in our restaurant or in our outside environments.

During our afternoon learning, pupils' all-round skills are continued to be developed through subjects that develop the self and an understanding of the wider world.

The day ends at 15:20 when after school clubs, run by school staff or outside partners, begin.

At home, pupils are expected to undertake out of school learning tasks as set by the class teacher. We appreciate parental support in helping and supervising homework tasks.





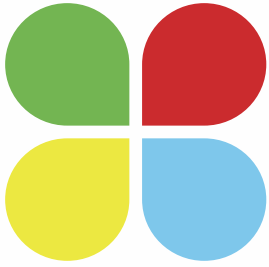
*Responsibility (Trust)
'To make smart
choices'*





*“Every day is an exciting
new adventure”
Year 6 pupil*





Welfare and care

The values, expectations and attitudes of the school community are shared with children and discussed so that they are made their own. The school has adopted a positive approach to behaviour management. We do our best to minimise disruption to the pupils' learning and pursue a range of strategies to reward good behaviour, bringing in sanctions only when necessary.

Parents/carers are informed if their child's behaviour begins to prevent them, or others, from learning and they are invited to work with the class teacher to find solutions to the problem. It is essential that pupils see home and school working together in partnership to support the process.

All types of bullying are taken extremely seriously. In the first instance, children are encouraged to tell their teacher or a member of staff if they feel they are being bullied. At Kelvedon, we use a range of different strategies to resolve incidents of bullying and disputes.

The school has a duty of care and the right to take reasonable action to ensure the welfare and safety of its pupils. If a member of staff has cause to be concerned that a pupil may be subject to ill treatment, neglect or any other form of abuse, the school will follow child protection procedures and inform social services of its concern.

The school houses

Our school logo includes the colours of all four school houses which are named after famous British dukes and explorers: Drake, Scott, Marlborough and Wellington. Pupils compete in house competitions throughout the year. They can now choose to wear a blue tie striped with their house colours as part of their uniform and each house has its own coloured PE kit.

Our uniform

Our school dress code is:

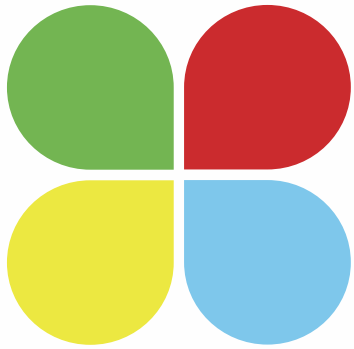
- white shirt or t-shirt
- royal blue school sweatshirt or jumper/cardigan
- black skirt/pinafore/trousers
- Black shoes (trainers and high heels are not permitted)
- House PE kit
- Optional house tie

Thank you for your interest in Kelvedon St. Mary's Church of England Primary Academy.

We hope you will be very happy in your learning here.



'Together We Achieve'



**KELVEDON
ST MARY'S**
CHURCH OF ENGLAND
PRIMARY ACADEMY, NURSERY
& AUTISM SUPPORT CENTRE

Docwra Road, Kelvedon, Essex. CO5 9DS
t: 01376 570411
e: admin@kelvedonacademy.com
w: www.kelvedonacademy.com



A Canonium Learning Trust School